

# SPEC SHEET + MEASUREMENTS

**SPORT-TEK**

## Sport-Tek® Women's Ultimate Performance V-Neck. LST700

### Product photo



A soft cotton hand combines with sweat-wicking, stretchable performance to make training cooler and drier.

- 5-ounce, 95/5 poly/spandex jersey
- Tag-free transfer label
- Raglan sleeves

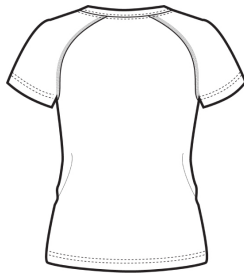
### CARE INSTRUCTIONS

MACHINE WASH COLD. WITH LIKE COLORS. NON-CHLORINE BLEACH ONLY IF NEEDED. DO NOT USE FABRIC SOFTNER. TUMBLE DRY LOW, REMOVE PROMPTLY. COOL IRON IF NEEDED. DO NOT DRY CLEAN.

### Sketches



front



back

# SPEC SHEET + MEASUREMENTS

**SPORT-TEK**

Sport-Tek® Women's Ultimate Performance V-Neck.  
LST700

## PRODUCT MEASUREMENTS

	XS	S	M	L	XL	XXL	3XL	4XL
Body Length at Back	25	25 1/2	26	27	28	29	29 1/2	30
Bust	17	18	19	20 1/2	22	23 1/2	25 1/2	27 1/2
Size	2	4/6	8/10	12/14	16/18	20/22	24/26	28/30
Sleeve Length	12 1/2	13	13 1/2	14 1/8	14 3/4	15 3/8	16 1/8	16 7/8

**Body Length at Back:** Measured from high point shoulder to finished hem at back.

**Bust:** Measured across the chest one inch below armhole when laid flat.

**Sleeve Length:** Start at center of neck and measure down shoulder, down sleeve to hem.

## SIZE CHARTS

	XS	S	M	L	XL	XXL	3XL	4XL
Bust	32-34	35-36	37-38	39-41	42-44	45-47	48-51	52-55
Size	2	4/6	8/10	12/14	16/18	20/22	24/26	28/30

# SPEC SHEET + MEASUREMENTS



Sport-Tek® Women's Ultimate Performance V-Neck.  
LST700

## HOW TO MEASURE

---



### BUST

Measure under the arm and around the fullest part of the bust with arms down, keeping tape horizontal.

## COLORS

---

Please note: PMS code information is shown only when an exact match is available.



Black  
PMS BLACK  
C



Heather Grey  
PMS 428C



True Navy  
PMS 533C



True Royal  
PMS 7687C



White