

# SPEC SHEET + MEASUREMENTS

**SPORT-TEK**

Sport-Tek® Ultimate Performance Crew. ST700

## Product photo



A soft cotton hand combines with sweat-wicking, stretchable performance to make training cooler and drier.

- 5-ounce, 95/5 poly/spandex jersey
- Tag-free transfer label
- Raglan sleeves

## CARE INSTRUCTIONS

Machine wash cold with like colors. Non-chlorine bleach only if needed. Do not use fabric softener. Tumble dry low, remove promptly. Cool iron if needed. Do not dry clean.

**Price includes decoration in one location:**

**XS-XL: \$25.00**

**2XL: \$28.00**

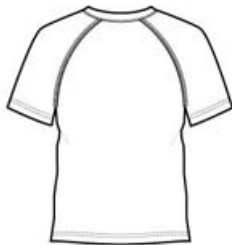
**3XL: \$29.00**

**4XL: \$30.00**

## Sketches



front



back

# SPEC SHEET + MEASUREMENTS

**SPORT-TEK**

Sport-Tek® Ultimate Performance Crew. ST700

## PRODUCT MEASUREMENTS

	XS	S	M	L	XL	2XL	3XL	4XL
Body Length at Back	27 1/2	28 1/2	29 1/2	30 1/2	31 1/2	32 1/2	33	33 1/2
Chest	18 1/2	20	21 1/2	23	24 1/2	26	28	30
Sleeve Length	16 3/4	17 1/2	18 1/4	19	19 3/4	20 1/2	21 1/4	22

**Body Length at Back:** Measured from high point shoulder to finished hem at back.

**Chest:** Measured across the chest one inch below armhole when laid flat.

**Sleeve Length:** Start at center of neck and measure down shoulder, down sleeve to hem.

## SIZE CHARTS

	XS	S	M	L	XL	2XL	3XL	4XL	5XL	6XL	7XL	8XL	9XL	10XL
Chest	32-34	35-37	38-40	41-43	44-46	47-49	50-52	54-57	58-60	61-63	64-66	67-69	70-72	73-75

## HOW TO MEASURE



### CHEST

Measure under the arm and around the fullest part of the chest with arms down, keeping tape horizontal.

# SPEC SHEET + MEASUREMENTS



Sport-Tek<sup>®</sup> Ultimate Performance Crew. ST700

## COLORS

---

Please note: PMS code information is shown only when an exact match is available.



Black  
PMS BLACK  
C



Heather Grey  
PMS 428C



True Navy  
PMS 533C



True Red  
PMS 200C



True Royal  
PMS 7687C



White